











They offer different [flash templates](#) with latest features.

## [community.linuxmint.com](http://community.linuxmint.com)

The website for all Linux Mint users

- [Home](#)
- [Community](#)
  -  [Ideas](#)
  -  [Tutorials](#)
  -  [Hardware](#)
  -  [Software](#)
  -  [Countries](#)
  -  [Users](#)
  -  [Moderation](#)
  -  [Chat room](#)
- [Testing](#)
  -  [ISO Images](#)
  -  [Teams](#)

Login

Username

Password

☐

Remember me

[Forgot password](#)

Login

[Register](#)

Back

Written by:



[Brahim](#)

Score: 4

votes: 10

Format: Article



## How to install compiz on Linux Mint 17 Qiana Mate edition

---

This tutorial applies to the coming release of Linux Mint, Qiana Mate edition which will be out at the end of May 2014 😊

## **Note:**

**1- If you have nvidia drivers, install theme before you proceed or else you might run the risk of ending up with a unusable desktop.**

**2- For unknow reasons to me, you have to delete the default bottom panel then replace it with a new one before you start using compiz, i.e. before you run "compiz --replace, or else you will end up with an unclickable bottom panel.**

**3- On Linux Mint 17 RC, you have to upgrade the above packages together with Mintmenu.**

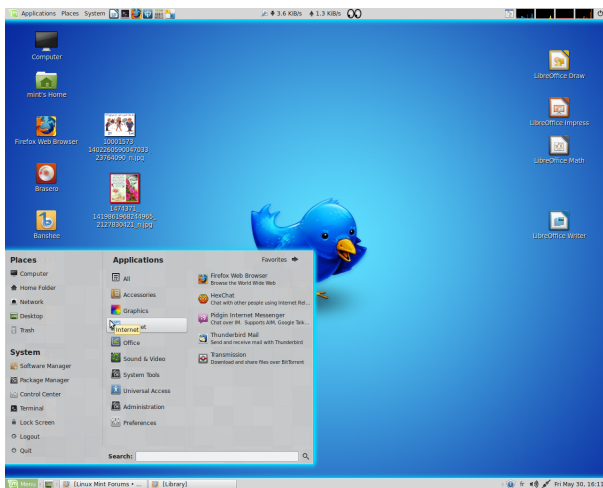
**4- There is a bug in the Mintmenu and it might look out of place sometimes:**

5- installare compiz-config-backend-gconf

6- ccsn: preference > backend > Gsetting conf b.  
> integration in Deskt. env.

7- in General Setting (TAB Desktop Size) impostare 4 - 1 - 1  
e poi CHIUDERE IMMEDIATAMENTE CON LA X : Compizconfig  
(questo risolve un bug)

NON attivare Effect: 3D windows , neppure Deformation cube.



1- install the followig packages:

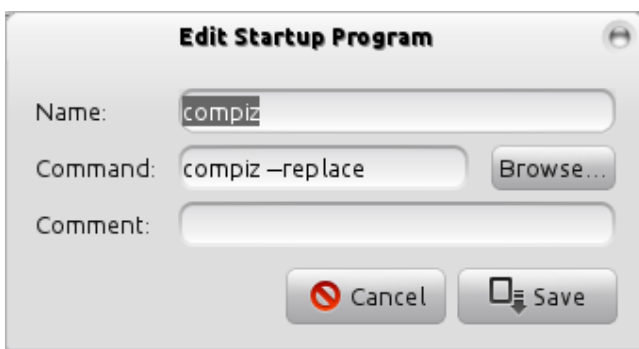
- compiz
- compizconfig-settings-manager
- compiz-plugins-extra
- libdecoration0-dev

```
sudo apt-get install compiz compizconfig-settings-manager compiz-plugins-extra libdecoration0-dev
```

2- In terminal run:

```
compiz --replace
```

3- Go to Startup Applications click on add and in the name field write "compiz" and in the command field enter "compiz --replace"(without the punctuation) click on Add again then Close. This is to make compiz start automatically on next logins.

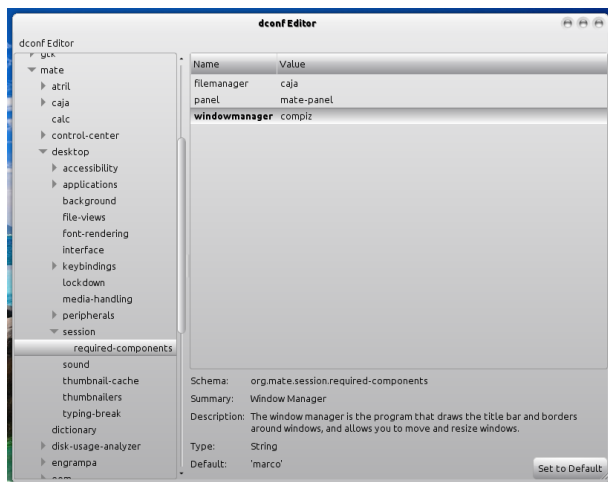


4- To stop that high CPU usage, install dconf Editor:

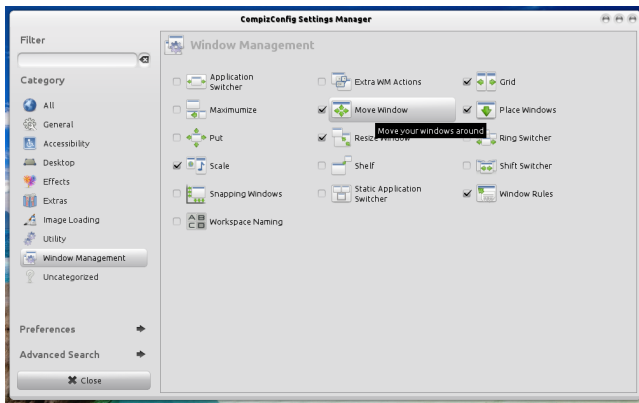
```
sudo apt-get install dconf-editor
```

and navigate to org > mate > desktop > session > required-components > windowmanager and replace "marco" with "compiz" or open a terminal and run:

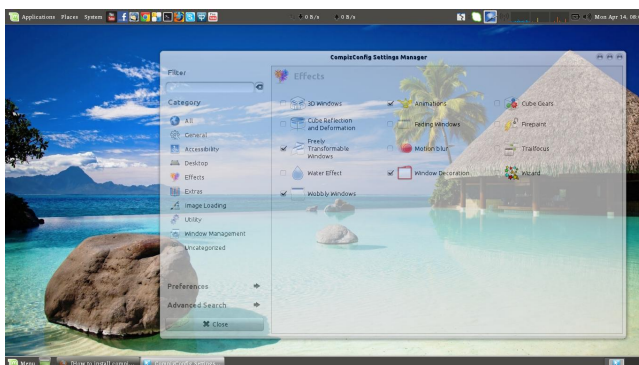
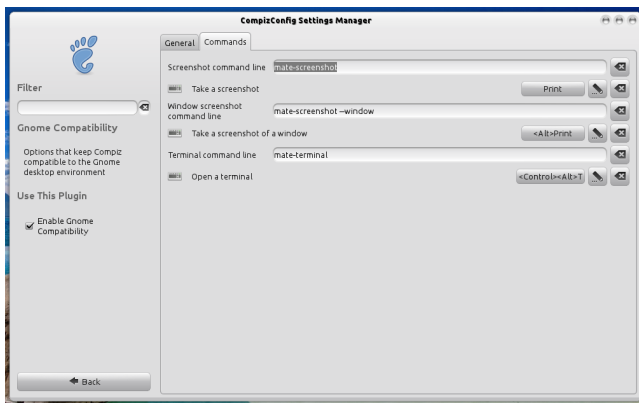
```
sudo gsettings set org.mate.desktop.session.required-components windowmanager compiz
```



5- Start the Compiz Configuration Settings Manager and check “move window” , "Place Windows" and any other and any other functions you want to activate



6- Go to General section, check "Gnome Compatibility", open it and go to Commands tab and replace (in all 3 command lines) the word "gnome" with 'mate'. Go back and test this: press Prt Sc key. Now you can take a desktop screenshot.



If you want to use Emerald window decorator follow this tutorial by webup8 <http://www.webupd8.org/2013/05/how-to-install-emerald-in-ubuntu-1304.html>



And the startup app is not needed.

Why the navigation tree in dconf-editor adds an extra level seems to be a schema configuration issue.

3 months ago



[Bill MI](#)

Oh... in dconf-editor, it's not that obvious how to change a value. Double-click works. The old gconf-editor was similar.

You already include the dconf-editor setting that loads up compiz instead of marco. Navigate the trees to:

```
org.mate.desktop.session.required-components
```

...and change windowmanager from marco to compiz. At that point, compiz should be loaded automatically (no start app needed).

While you're there in dconf-editor, notice the Schema displayed for that entry:

```
org.mate.session.required-components
```

...so what happened to 'desktop'? Something's strange and I wish I knew what this difference means. I do know one thing, if I run the gsettings command above, I get a 'No such schema' error. But when I remove that 'desktop' level from the gsettings command it appears to work but doesn't stick past reboot as viewed in dconf-editor! So I'm totally confused. :-)

3 months ago



[Bill MI](#)

But when set with the dconf-editor it sticks and works on my system with no startup app (shrug).

This is an old Pentium D system with nvidia. Perhaps not all systems will behave like mine but I'm curious if you see something different?

Last, I'd suggest making step 2 (compiz --replace) much later, after some key settings. When run at this time compiz isn't ready. I have absolutely nothing turned on in CCSM.

And yes, I ran into that SAME strange un-clickable bottom panel! Good catch. :-)

3 months ago



[Brahim](#)

how did you do it with gconf-settings ? I would be glad if you can improve this tutorial!

Thanks, my old eyes have e\_zoom back! Just a quick addition to this great guide.

3 months ago



[Bill MI](#)

There's something screwy with the gconf-editor and gsettings paths involving the 'desktop' level. Compare and you'll see what I mean. I can modify the gsettings path (otherwise I get a No-Schema error) but the changed value won't stick. Yet, if I use gconf-settings all is well AND no Startup app is needed - I'm running fine without one.

for the Mintmenu go to synaptic package manger and upgrade it to the latest version. I don't think you'll need to do this once the stable release is out, just update your system and you'll be fine but for the time being just upgrade it bro with synaptic as I said.

3 months ago



[Brahim](#)

I forgot to tell you to install "compiz" my bad bro!!

3 months ago



[Brahim](#)

para que funcione compiz en linux mint 17 el panel lo tienen que poner arriba con la barra de menu personalizada. lamentablemente no se puede con el mintmenu.

4 months ago



[neo36](#)

It doesn't work in the RC version of Mint 17: There's some kind of bug with the MintMenu (Non clickable) and the terminal window shows a decor plugin fault (No default theme found). (Tested with 2 computers and within vmware fusion)

4 months ago



[sebwise](#)

4 months ago



[bkjaya1952](#)

useful

## Other tutorials from Brahim

- [How to make Linux Mint look like BlackOpal Linux](#)
- [How to make Linux Mint 14 Cinnamon look like Zorin OS 6 Core](#)
- [How to install compiz on Linux Mint 14 Nadia Mate edition:](#)
- [Plymouth themes: Fix, install, edit and create on Linux Mint](#)
- [How to make Linux Mint 14/ 13 Cinnamon/ Mate look like Windows 7](#)
- [How to Install LiveWallpaper on Linux Mint 13/ 14 from PPA](#)
- [How to Install Tor Browser Bundle On Linux Mint From PPA](#)
- [How to install Burg and Super Boot Manager on Linux Mint13/14](#)
- [How to convert audio/ video files on Linux Mint](#)
- [How to Disable the Ugly Minimize Effect on Mate on Linux Mint 13 /14/15](#)
- [How to install and activate compiz on Linux Mint 13 Maya Mate edition](#)
- [How to Install GRUB 2.00 in Linux Mint 13 \(Maya\)](#)
- [How to restore login sound after enabling automatic login on Linux Mint 14 Mate & Cinnamon](#)



- [Solution to 'Wireless disabled by Hardware switch' on Linux Mint](#)
- [How to make the hot corner show desktop and restore windows on Linux Mint Cinnamon](#)
- [How to make Linux Mint/ Ubuntu \(Cinnamon\) look like Windows8](#)
- [Solution to headphones and speakers working at the same time on Linux Mint 13](#)
- [How to dual-boot Linux Mint with Windows 8](#)
- [How to establish a 3g mobile broadband autoconnection/ reconnection on Linux Mint](#)
- [How to get The Sound Working In Skype With Linux Mint 16 Petra 64bit version](#)
- [The easiest way to fix plymouth after installing nvidia drivers on Linux Mint](#)
- [How to create a basic GTK3 theme on Linux Mint](#)
- [How to fix Minitube hanging on Linux Mint 17](#)
- [How to install Google Earth on Linux Mint 17 64bit properly](#)
- [How to fix Brasero stuck at 'Creating image checksum' on Linux Mint](#)

[Linux Mint](#) | [Blog](#) | [Forums](#)

Copyright © 2009 . All Rights Reserved.